

# **Northeast Louisiana Business Outlook Summit: 2014**

**Dr. Robert Eisenstadt, University of LA-Monroe**

**Dr. John Francis, Louisiana Tech University**



**CenturyLink Center, Monroe, Louisiana**

## **\*Economic Impact to NELA of Duck Dynasty/Commander in 2013**

- Overall Impact (aggregated expenditures) = \$8.8 million.
- Change in Household Income = \$2.8 million
- Additional Full-time Equivalent Jobs = 104
- Additional Local Sales Tax Revenue = \$365,000

**\*Apologies to Willie.**

## Estimated Retail Sales in Ouachita Parish

	With Motor Vehicle Sales (\$billions)	% Change from Previous Year
2012	<b>\$2.77</b>	<b>4.4%</b>
2013	<b>\$2.86</b>	<b>3.5%</b>

	Without Motor Vehicle Sales (\$billions)	% Change from Previous Year
2012	<b>\$2.49</b>	<b>4.3%</b>
2013	<b>\$2.56</b>	<b>3.0%</b>

	Autos Only (\$millions)	% Change from Previous Year
2012	<b>\$278.50</b>	<b>5.2%</b>
2013	<b>\$301.70</b>	<b>8.3%</b>

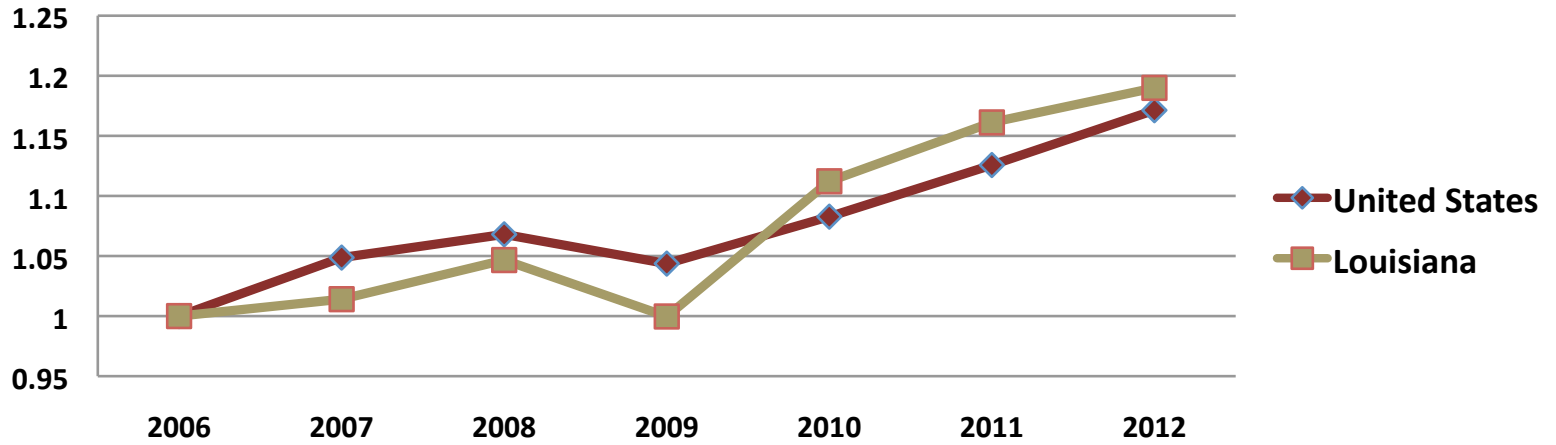
US Equivalents: Annual % Change		
	Retail Total	Auto Only
2012	<b>4.80%</b>	<b>8.10%</b>
2013	<b>3.30%</b>	<b>10.10%</b>



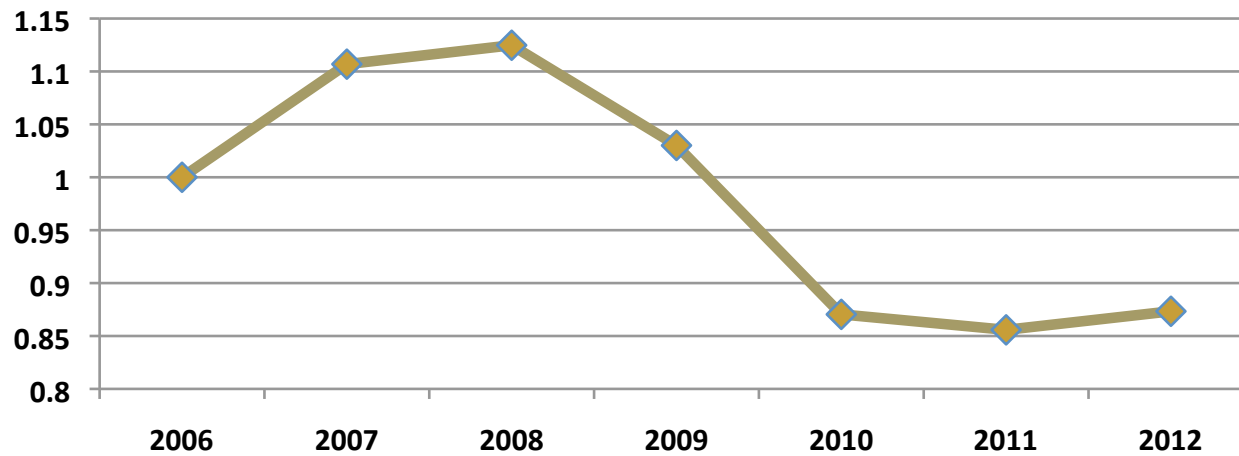
## New Investment in Louisiana 2013-2014

<u>Company</u>	<u>Investment</u>	<u>Location</u>	<u>Direct Employment</u>
Sasol gas-to-liquids & Chemical Project	\$16-21 Billion	Westlake, LA	1,253
Libbey, Inc	\$20 Million	Shreveport	70
G2X Energy Inc. natural Gas to gasoline	\$1.3 Billion	Port of Lake Charles	243
Magnolia LNG natural gas liquefaction production	\$2.2 Billion	Lake Charles	45
Sempra Energy/Cameron LNG	\$6 Billion	Hackberry	N/A
Talon Midstream L.P.	\$250 Million	Westlake, LA	30
W.R. Grace & Company Chemical Plant	\$150 Million	Sulphur	N/A
PSI Midstream Partners L.P	\$15 Million	Cameron	N/A
Louisiana Spirits	\$7 Million	Jennings	25
Elio Motors	N/A	Shreveport	1500
Computer Science Corp	N/A	Shreveport	800
Fibrebond Corp	N/A	Minden	225
CenturyLink	N/A	Monroe	Ongoing
Mid-South Extrusion	\$4 Million	Monroe	15

### US GDP and LA GSP: 2006-2012



### Index of LA Tax Revenues: 2006-2012



## The Change in Real GSP: Top 5 States, Louisiana

The % Change in Real GDP: All Sectors				
State	2008-2012		2011-2012	
	Rank	% change	Rank	% change
North Dakota	1	35.04%	1	13.38%
Texas	2	12.49%	2	4.82%
Oregon	3	10.14%	3	3.95%
Washington	11	5.51%	4	3.63%
Minnesota	19	4.47%	5	3.55%
Louisiana	6	7.88%	29	1.49%
U.S.	n/a	3.18%	n/a	2.46%



## The Change in Real GSP: Bottom 5 States, Louisiana

The % Change in Real GDP: All Sectors				
State	2008-2012		2011-2012	
	Rank	% change	Rank	% change
Connecticut	48	-2.60%	50	-0.13%
Delaware	18	4.50%	49	0.19%
Wyoming	42	-0.21%	48	0.23%
New Mexico	33	2.39%	47	0.24%
South Dakota	17	4.91%	46	0.24%
Louisiana	6	7.88%	29	1.49%
U.S.	n/a	3.18%	n/a	2.46%



## The % Change in Real GDP: Top 10 Ranked, All Sectors

State	2008-2012		2011-2012	
	Rank	% change	Rank	% change
North Dakota	1	35.04%	1	13.38%
Texas	2	12.49%	2	4.82%
Oregon	3	10.14%	3	3.95%
Washington	11	5.51%	4	3.63%
Minnesota	19	4.47%	5	3.55%
California	43	-0.29%	6	3.47%
Utah	7	7.65%	7	3.42%
Indiana	10	5.57%	8	3.30%
Tennessee	22	4.22%	9	3.28%
West Virginia	4	9.29%	10	3.27%
Louisiana	6	7.88%	29	1.49%
U.S.	n/a	3.18%	n/a	2.46%





## The % Change in Real GDP: Bottom 10 Ranked, All Sectors

State	2008-2012		2011-2012	
	Rank	% change	Rank	% change
Connecticut	48	-2.60%	50	-0.13%
Delaware	18	4.50%	49	0.19%
Wyoming	42	-0.21%	48	0.23%
New Mexico	33	2.39%	47	0.24%
South Dakota	17	4.91%	46	0.24%
Idaho	44	-0.77%	45	0.43%
Maine	37	0.91%	44	0.49%
New Hampshire	23	4.19%	43	0.52%
Virginia	13	5.27%	42	1.12%
Alaska	5	9.00%	41	1.13%
Louisiana	6	7.88%	29	1.49%
U.S.	n/a	3.18%	n/a	2.46%



## Employment Growth: Top 5, LA, U.S., Nonfarm

State	2008-2013		2012-2013	
	Rank	% change	Rank	% change
North Dakota	1	20.96%	1	3.57%
Utah	5	2.99%	2	3.16%
California	22	-0.61%	3	3.00%
Colorado	9	1.31%	4	2.94%
Texas	2	5.51%	5	2.90%
Louisiana	13	0.70%	22	1.32%
U.S.	n/a	-0.58%	n/a	1.69%

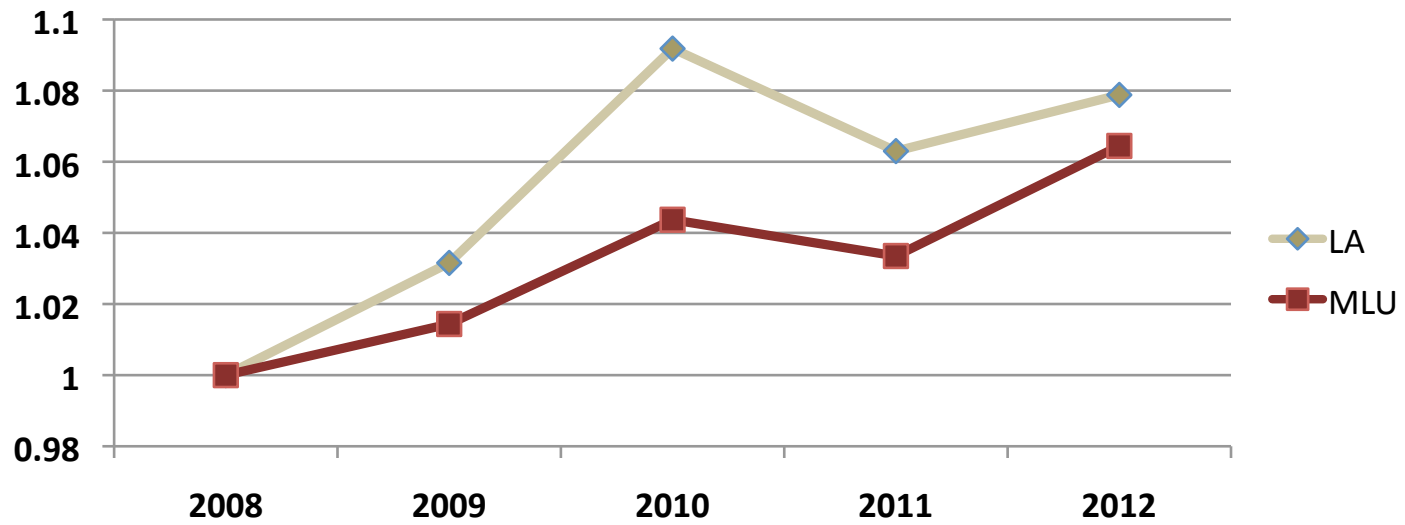


## Employment Growth: Bottom 5, LA, U.S., Nonfarm

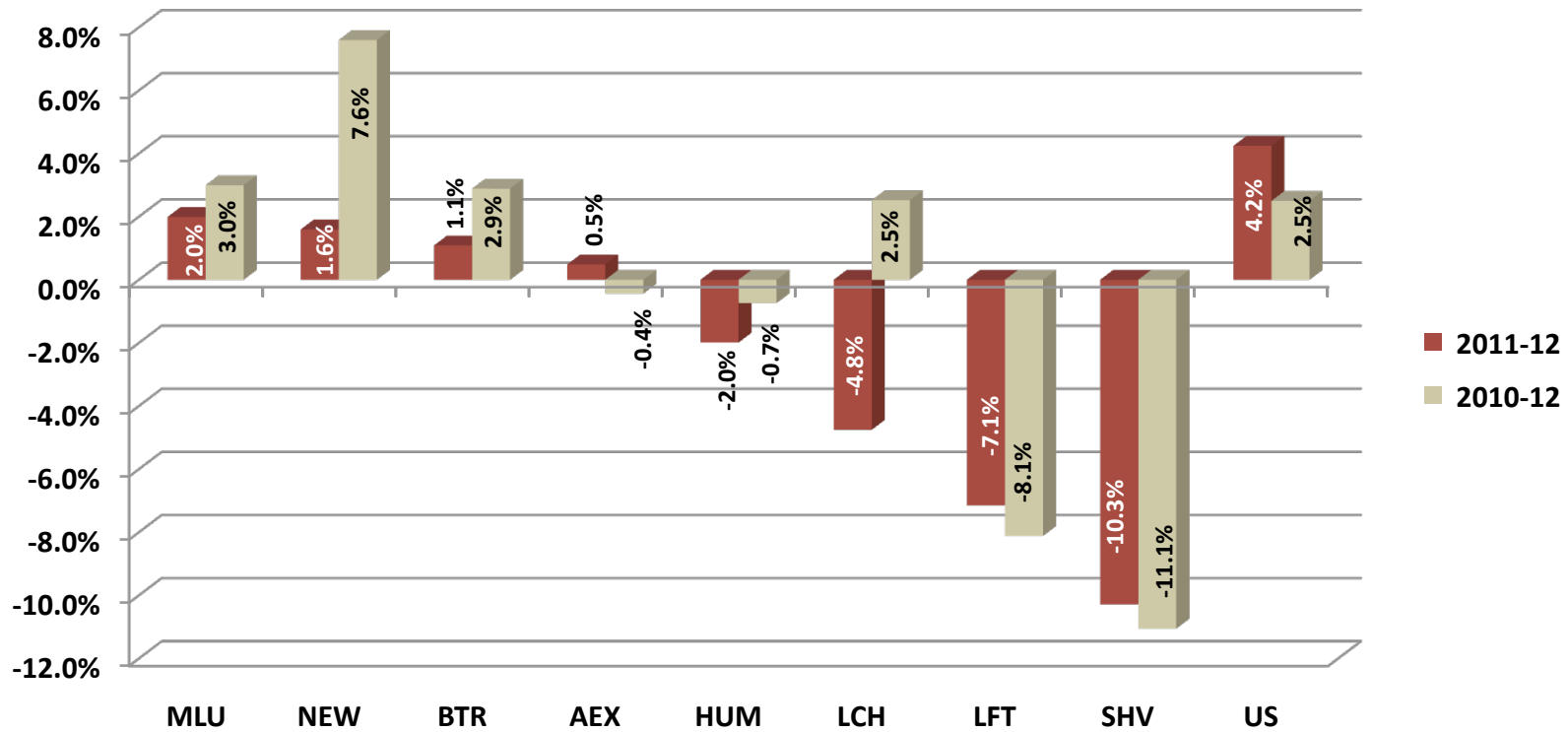
State	2008-2013		2012-2013	
	Rank	% change	Rank	% change
West Virginia	16	0.09%	50	-0.26%
Arkansas	36	-2.09%	49	0.08%
Pennsylvania	26	-1.03%	48	0.29%
Alaska	3	4.55%	47	0.36%
Arizona	4	4.55%	46	0.36%
Louisiana	13	0.70%	22	1.32%
U.S.	n/a	-0.58%	n/a	1.69%



### LA GSP and MLU GMP Index: 2008-2012 (Nominal)



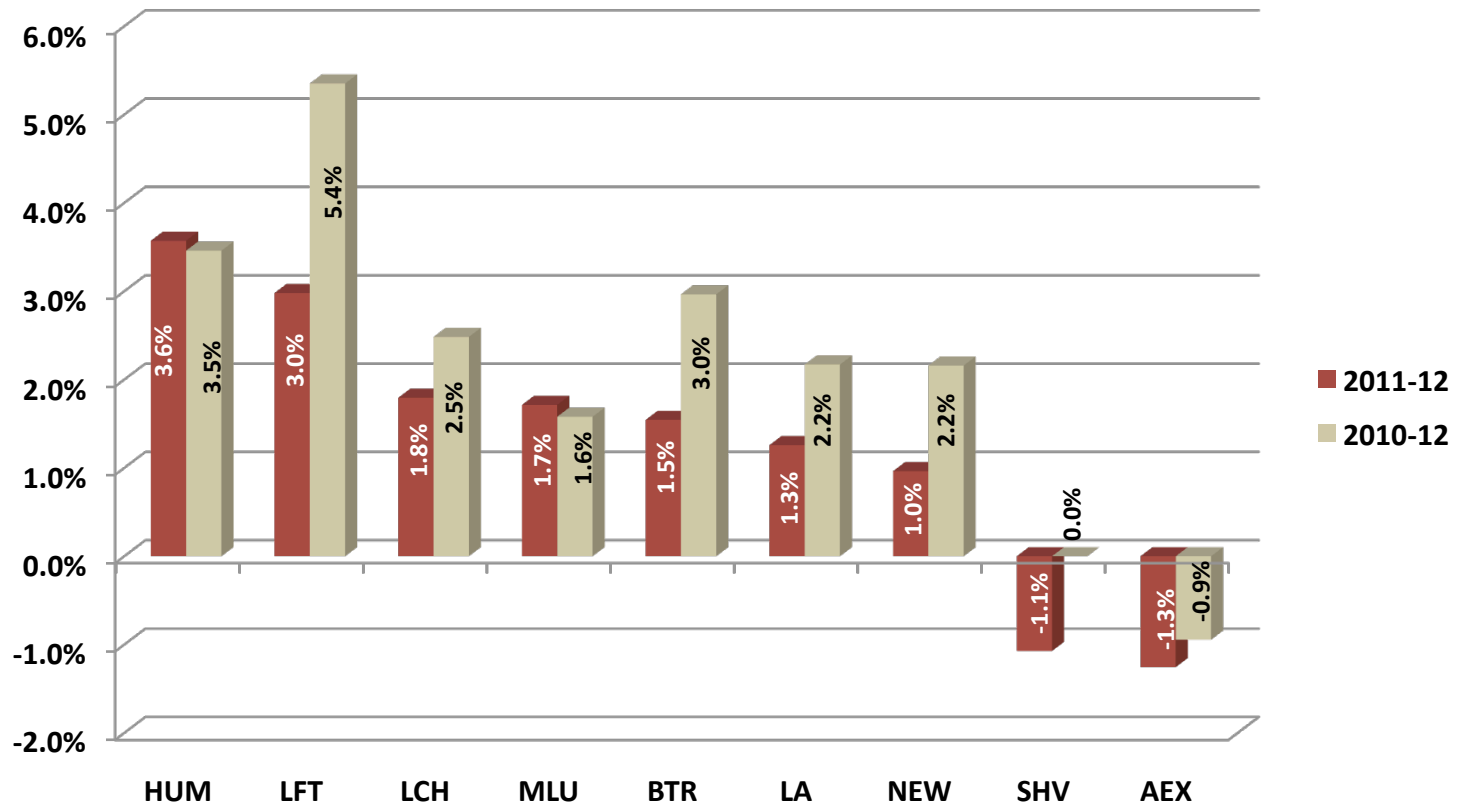
## Percentage Change in Real GMP by LA MSA, US



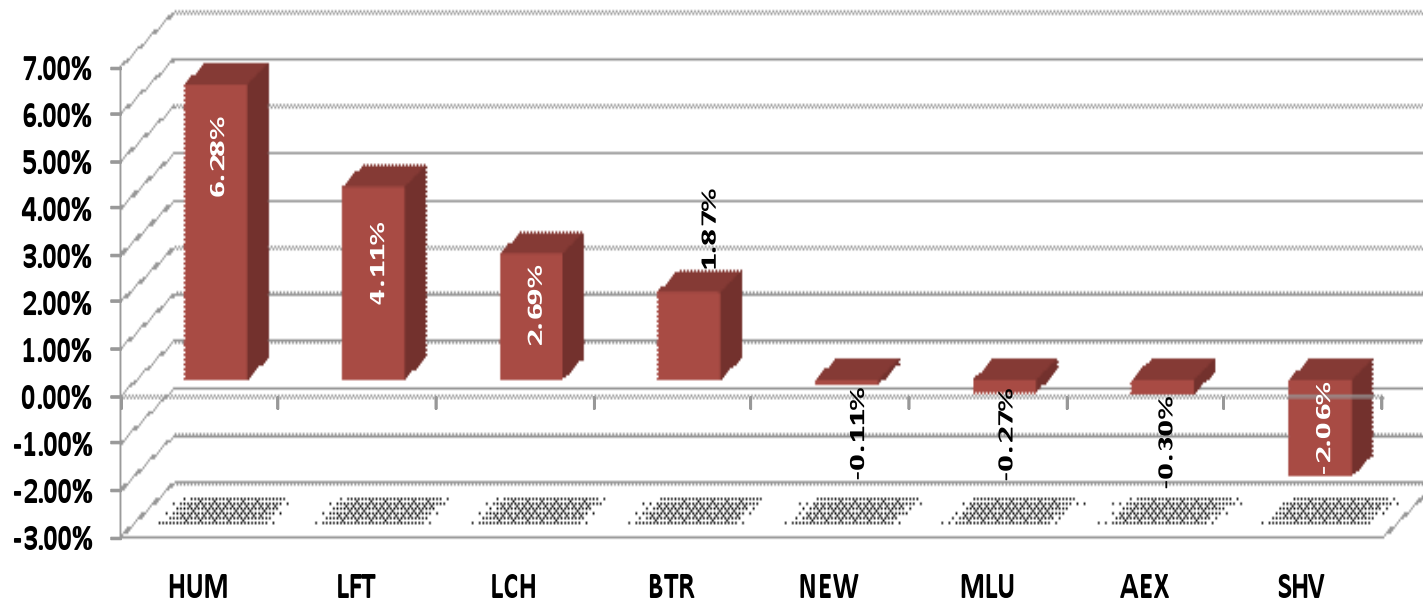
Lafayette, Shreveport the 3<sup>rd</sup> worst and worst performing MSA, respectively, in US.



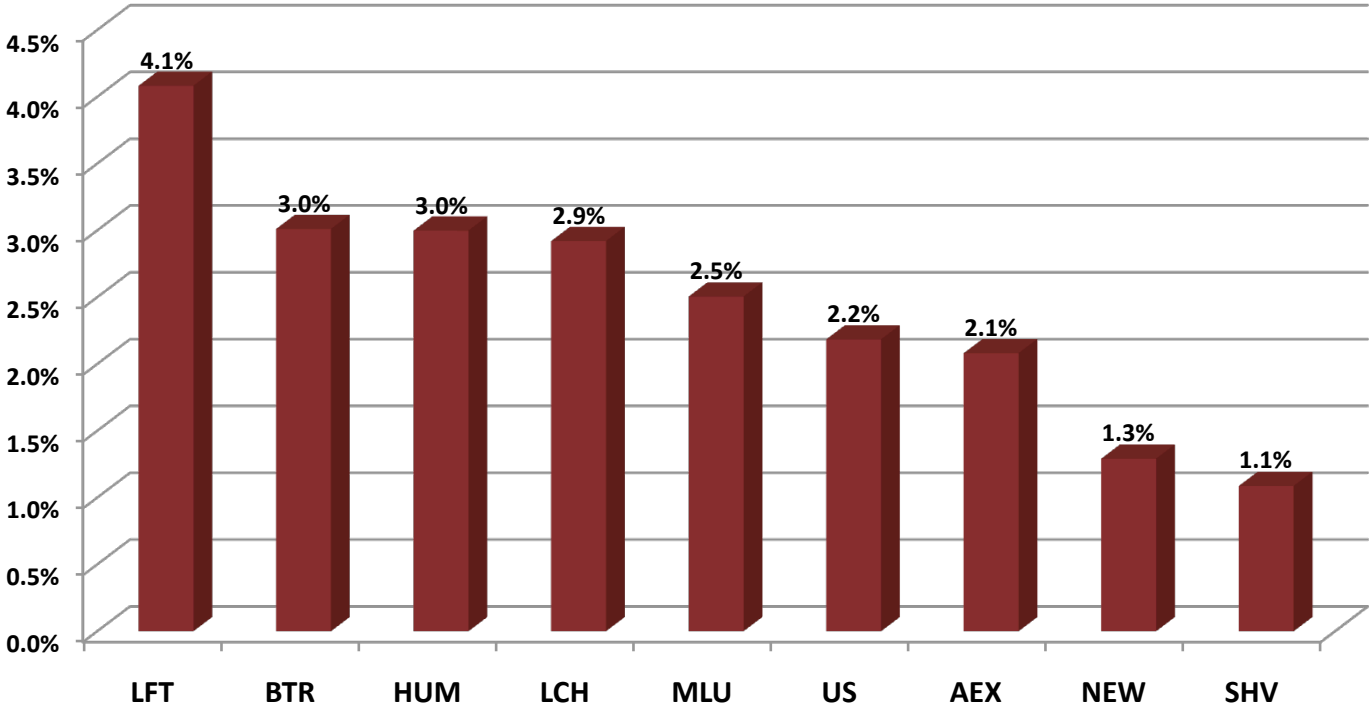
## The Change in Nonfarm Employment by MSA: 2011-12, 2010-12



Total Compensation on Change 2011-2012, All RLMA Industries, 2012 \$



### % Change Personal Income by LA MSA, US: 2011-12





## Employment Change by MSA for Select Industries (2010-2012)

	Manufacturing	Wholesale	Information	Healthcare & Social Assist.	Admin. & Waste Services
AEX	15.23%	7.76%	-10.23%	-0.69%	-4.58%
BTR	7.60%	5.49%	-4.63%	2.53%	3.15%
HUM	17.52%	1.26%	-2.51%	1.44%	7.83%
MLU	4.13%	-4.47%	5.56%	1.10%	19.71%
NEW	-6.97%	0.71%	13.23%	0.86%	-0.55%
LFT	12.29%	0.40%	-6.82%	3.81%	1.78%
LCH	3.22%	-0.19%	-3.60%	-0.78%	0.66%
SHV	-3.33%	5.93%	-18.42%	-1.32%	10.17%



## Employment Change by MSA for Select Industries (2011-2012)

	Manufacturing	Wholesale	Information	Healthcare & Social Assist.	Admin. & Waste Services
AEX	3.22%	-0.19%	-3.60%	-0.78%	0.66%
BTR	4.31%	3.19%	-2.20%	1.69%	0.61%
HUM	9.72%	1.70%	-0.89%	0.37%	4.60%
MLU	2.69%	-2.60%	10.65%	0.60%	15.73%
NEW	-3.27%	-1.15%	13.19%	0.31%	2.95%
LFT	4.15%	-0.62%	-2.44%	1.35%	-0.08%
LCH	-0.64%	6.22%	5.28%	-0.33%	15.28%
SHV	-2.25%	1.11%	-1.76%	-0.66%	-0.80%



New Residential Construction: % Change in Building Permits		
	2011-12	2012-13 (p)
AEX	28.2%	-17.4%
BTR	8.0%	-13.8%
HUM	45.9%	-5.1%
LFT	56.3%	9.0%
LCH	-49.4%	72.4%
MLU	51.4%	-24.0%
NEW	-1.5%	13.6%
SHV	12.6%	-0.9%

### Compensation Change by MSA for Select Industries (2010-2012)

	Manufacturing	Wholesale	Information	Healthcare & Social Assist.	Admin. & Waste Services
AEX	9.85%	11.95%	-10.16%	-4.26%	10.25%
BTR	10.45%	8.41%	-7.76%	1.37%	5.52%
HUM	18.10%	3.63%	-0.78%	-1.86%	8.35%
MLU	-0.74%	-1.66%	3.83%	-1.38%	14.74%
NEW	-5.33%	0.85%	4.29%	-1.72%	-7.62%
LFT	16.26%	4.59%	-3.34%	-1.42%	-6.55%
LCH	3.15%	11.15%	-10.20%	1.42%	15.70%
SHV	-1.05%	6.14%	-17.97%	-2.90%	0.64%



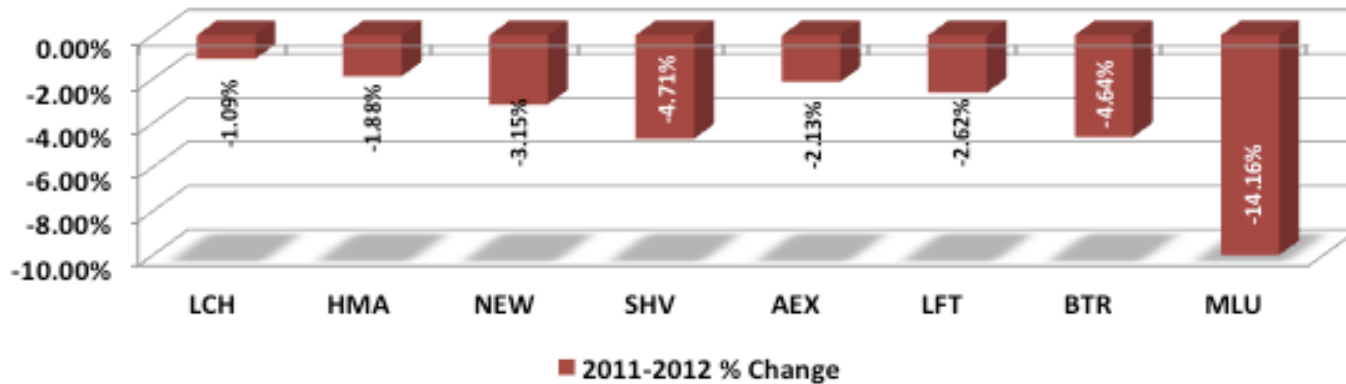
### Compensation Change by MSA for Select Industries (2011-2012)

	Manufacturing	Wholesale	Information	Healthcare & Social Assist.	Admin. & Waste Services
AEX	2.75%	3.75%	-3.80%	-1.68%	9.72%
BTR	6.26%	6.16%	-1.22%	1.27%	4.10%
HUM	8.78%	5.01%	2.31%	-1.86%	15.68%
MLU	4.21%	-0.05%	9.12%	-0.15%	14.74%
NEW	-3.13%	0.41%	10.26%	-0.15%	0.17%
LFT	4.59%	3.50%	1.79%	0.65%	-4.71%
LCH	1.69%	6.46%	3.54%	0.59%	13.00%
SHV	-2.33%	2.03%	-3.66%	-1.19%	-1.25%

## Percent Change in Educational Services Employment by MSA

	LCH	HMA	NEW	SHV	AEX	LFT	BTR	MLU
<b>2011-2012 % Change</b>	1.01%	-0.94%	-0.95%	-1.06%	-1.39%	-2.44%	-3.43%	-4.48%
<b>2010-2012 % Change</b>	-1.23%	-6.85%	-2.14%	-1.34%	-4.77%	-4.63%	-4.87%	-8.03%

### 1-Year Change in Educational Services Compensation, in 2012 \$



<b>Sample of RIMS II (type 2) Multipliers for LA</b>		
	<b>Total Change in Employment per \$1 million in Final Demand</b>	<b>Total Change in HH Income for each \$1 of Final Demand</b>
<b>Telecom/Digital</b>	<b>11.5</b>	<b>0.45</b>
<b>Call Centers</b>	<b>25.4</b>	<b>0.62</b>
<b>Education Services</b>	<b>21.66</b>	<b>0.71</b>
<b>Manufacturing</b>	<b>11.57</b>	<b>0.47</b>
<b>Hospitals</b>	<b>16.95</b>	<b>0.68</b>
<b>Inorganic Chemicals</b>	<b>10.72</b>	<b>0.54</b>
<b>Refineries</b>	<b>6.78</b>	<b>0.36</b>



Forecast Change in Employment and Household Income by MSA				
	% Change FT Employment	Change FT Jobs	% Change HH Income	Change in HH Income (\$million)
HUM	<b>3.20</b>	<b>3100</b>	<b>3.0</b>	<b>130.0</b>
LFT	<b>1.70</b>	<b>4400</b>	<b>1.7</b>	<b>192.0</b>
BTR	<b>1.10</b>	<b>4300</b>	<b>1.0</b>	<b>181.0</b>
MLU	<b>1.10</b>	<b>1200</b>	<b>1.4</b>	<b>50.0</b>
LCH	<b>0.50</b>	<b>500</b>	<b>0.5</b>	<b>22.0</b>
NEW	<b>0.10</b>	<b>450</b>	<b>0.1</b>	<b>23.0</b>
AEX	<b>(0.04)</b>	<b>(50)</b>	<b>(0.0)</b>	<b>(1.0)</b>
SHV	<b>(1.00)</b>	<b>(370)</b>	<b>(1.1)</b>	<b>(97.0)</b>

Data = 2011-12 chg in manf, Info, whole, healthcare, mining, admin/waste mgmt

