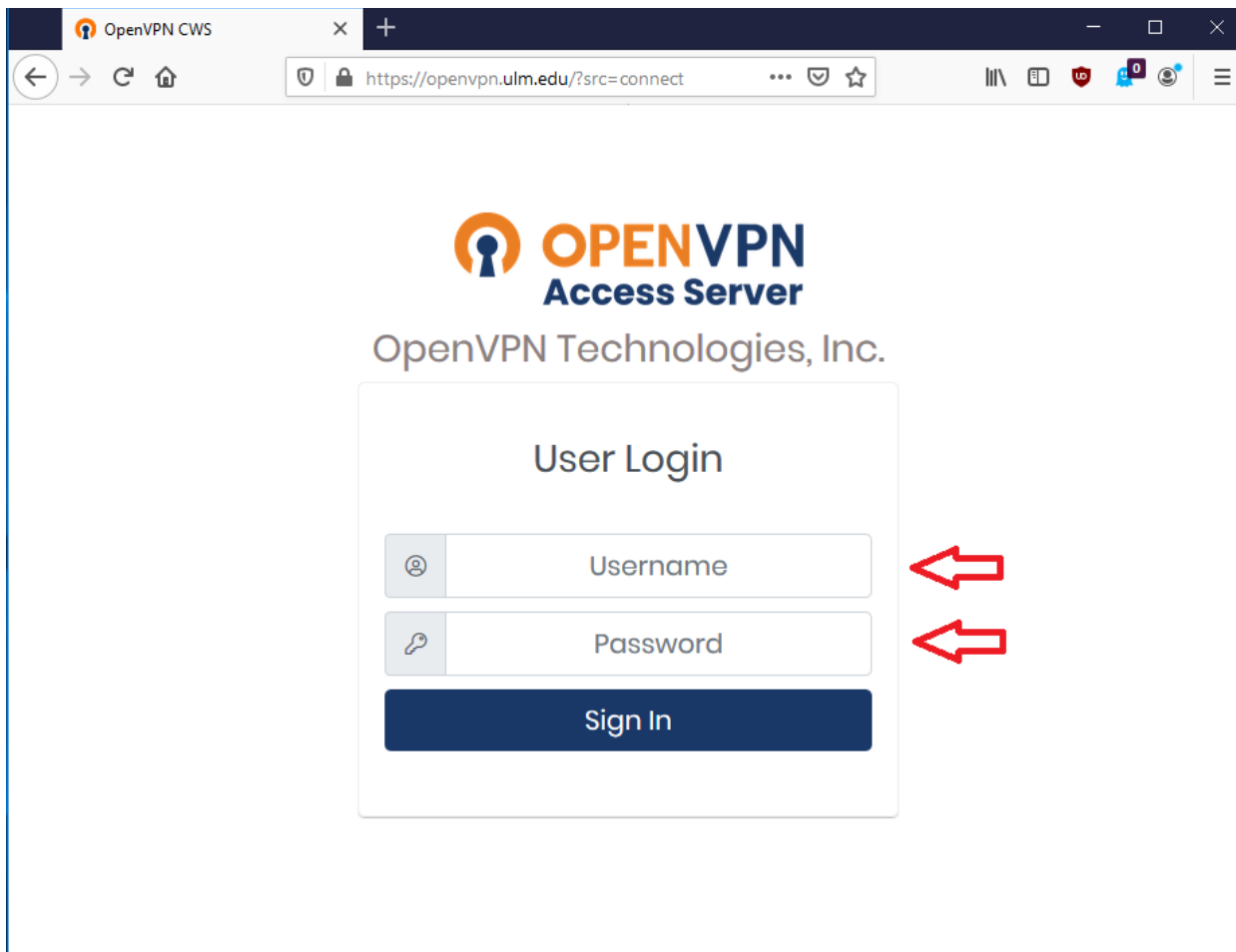


Windows 7/8/10 Install Guide for ULM OpenVPN

This guide will help you install the OpenVPN client onto your Windows 7/8/10 machine for remote access to ULM's network resources. If you have any issues following this guide, please contact the helpdesk @ 318-342-33333 or email helpdesk@ulm.edu

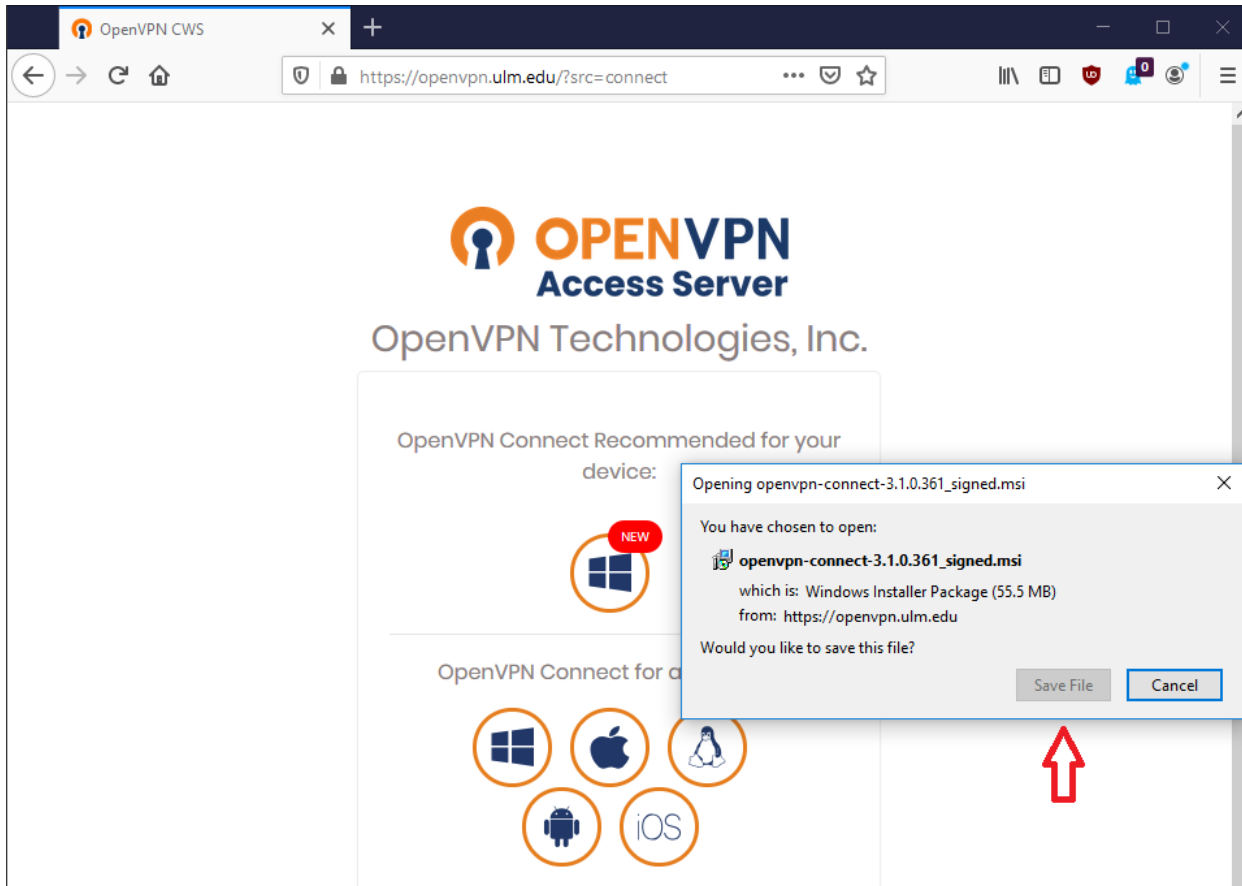
Step 1: Please go to the following website <https://openvpn.ulm.edu> and type in your username (without the @ulm.edu part) and password.



Step 2: Please click on your device type. It should have your recommended device as windows with the windows icon circled.

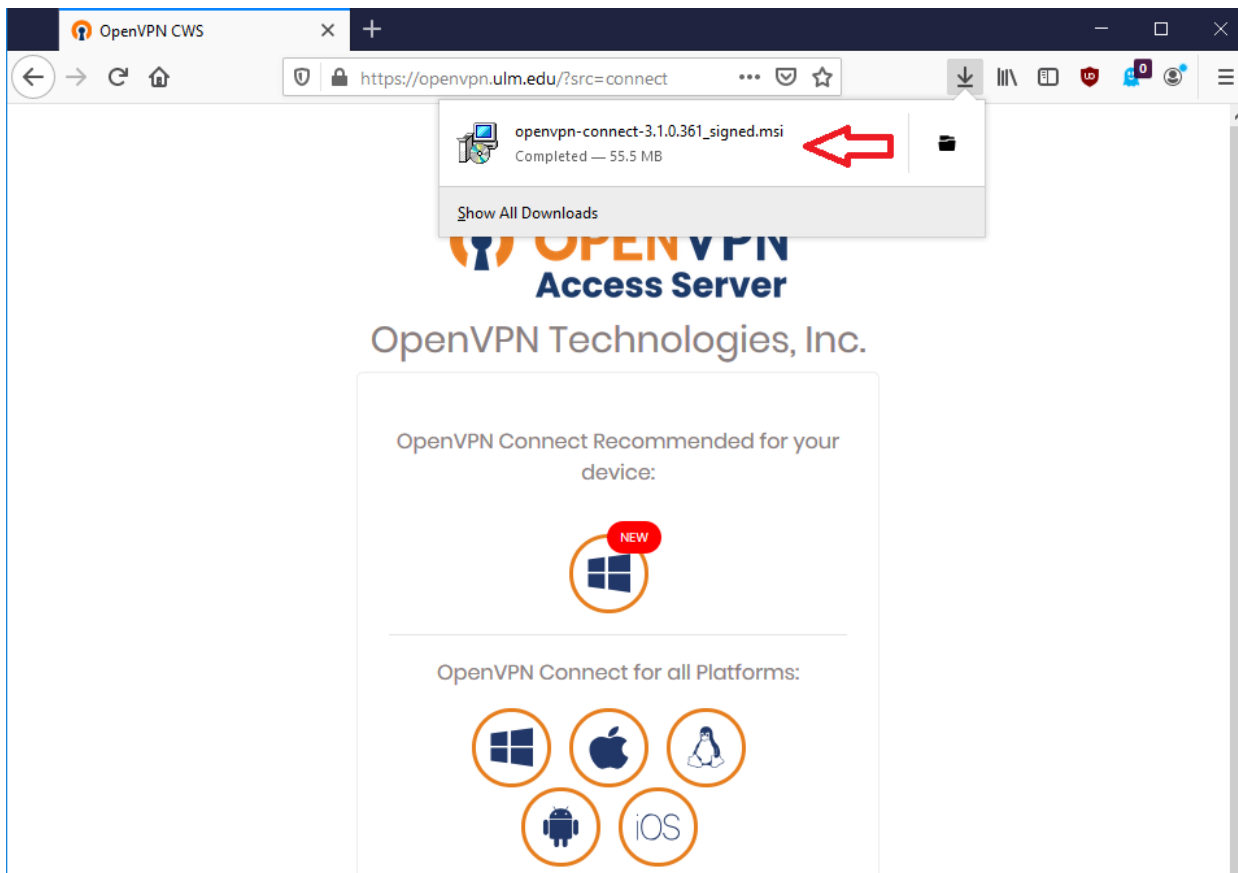
The screenshot shows a web browser window with the URL <https://openvpn.ulm.edu/?src=connect>. The page features the OpenVPN logo and the text "OpenVPN Access Server" and "OpenVPN Technologies, Inc.". The main content area is titled "OpenVPN Connect Recommended for your device:" and displays a Windows icon circled in orange with a red "NEW" badge and a red arrow pointing to it. Below this, the section "OpenVPN Connect for all Platforms:" shows icons for Windows, Apple, Linux, Android, and iOS. The "OpenVPN Connect v3:" section shows Windows and Apple icons, both with "NEW" badges. Under "Available Connection Profiles:", there is a link for "Yourself (user-locked profile)". A "Logout" button is located at the bottom of the main content area. The footer contains the text "POWERED BY OPENVPN © 2009-2019 OpenVPN Inc. All Rights Reserved".

Step 3: For Firefox browsers, click “Save File” For Chrome browsers, it will automatically save the file located in the lower left of your screen.

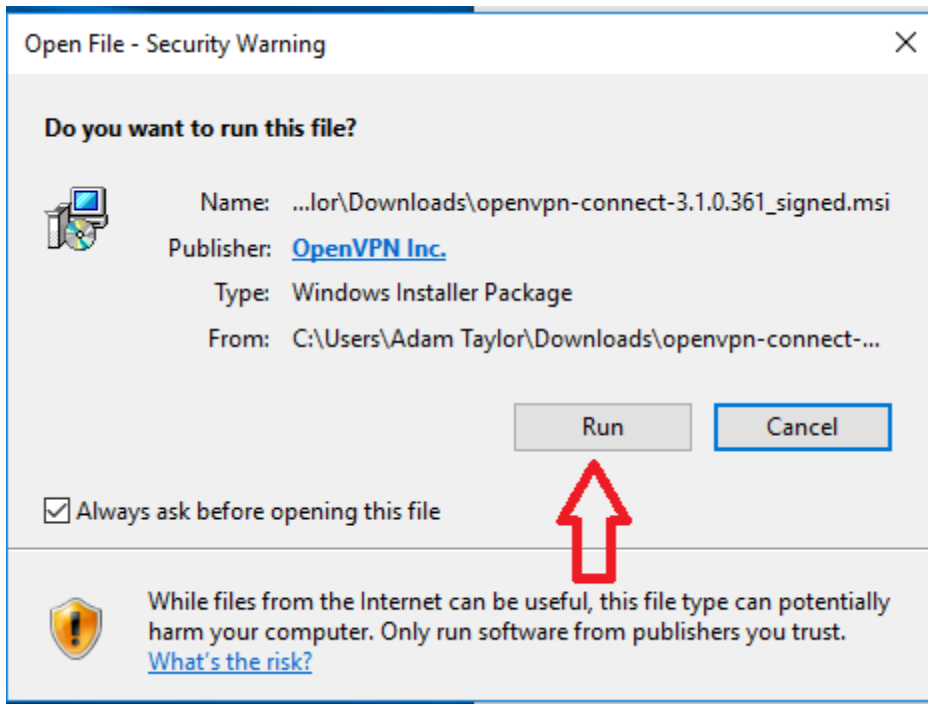


Step 4: For Firefox, click on the “openvpn-connect-3.1.0.361_signed.msi” application and run it. If Windows pops up a dark screen and a security question box, click “Yes”

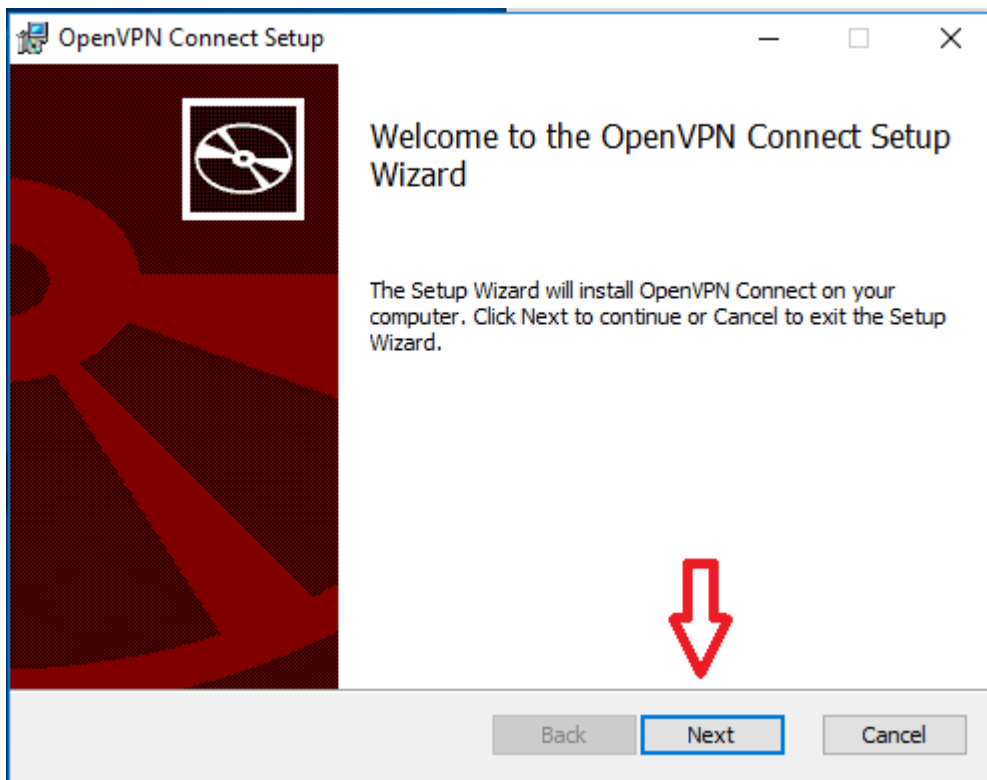
For Chrome, click on the file box located in the lower left of your screen. If Windows pops up a dark screen and a security question box, click “Yes”



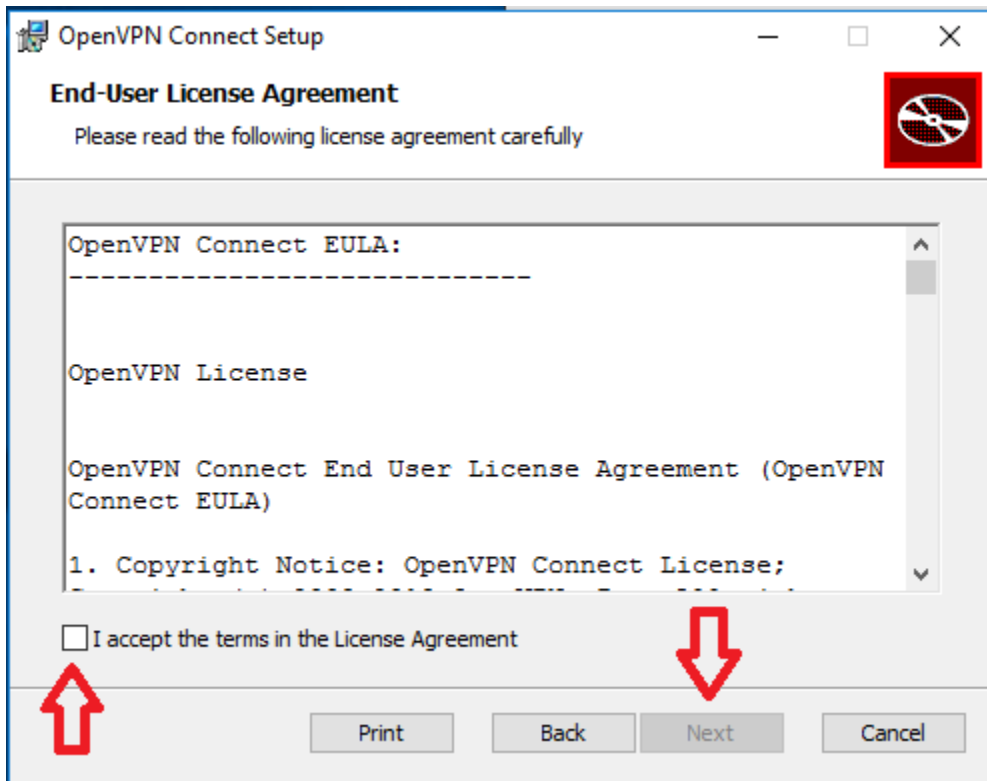
Step 5: Click run.



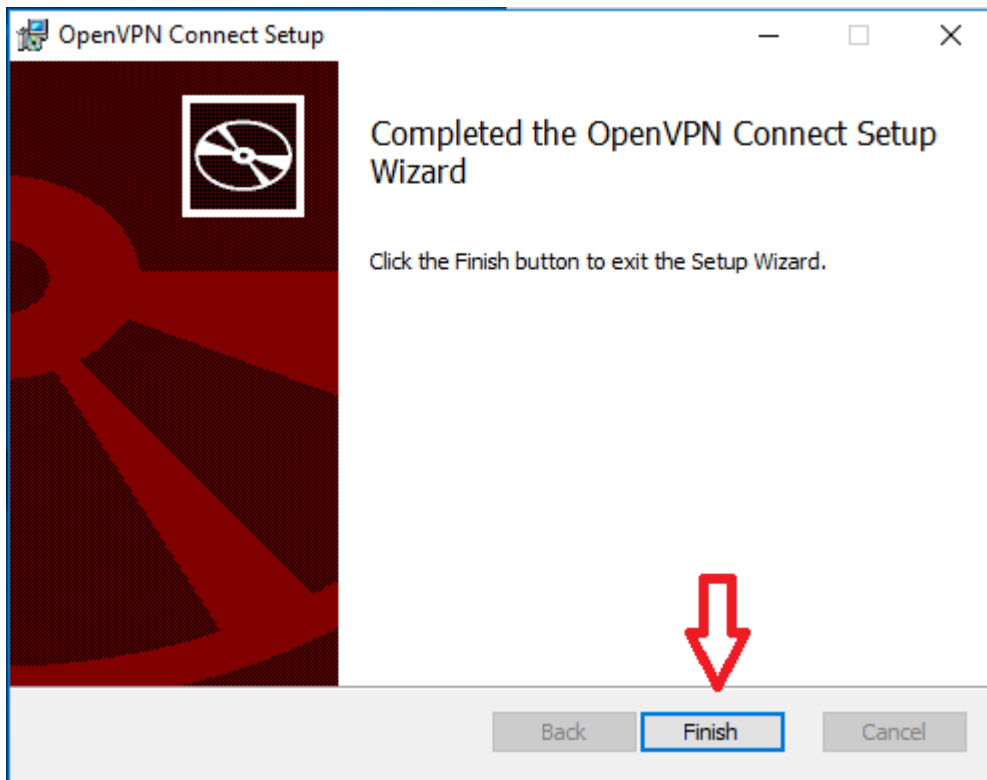
Step 6: In the OpenVPN Installer, click "next"



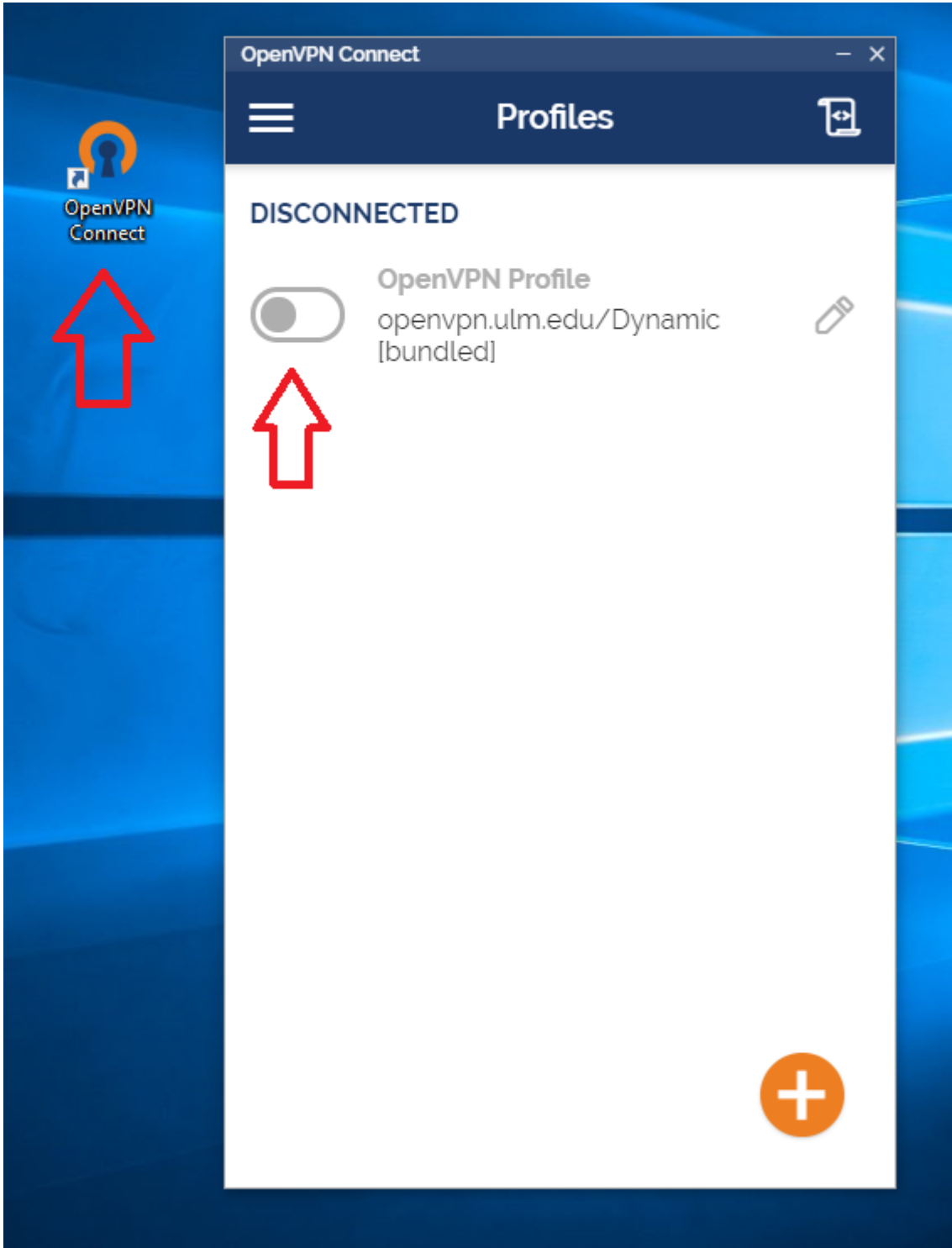
Step 7: Click on the box to accept the terms and then click “next”



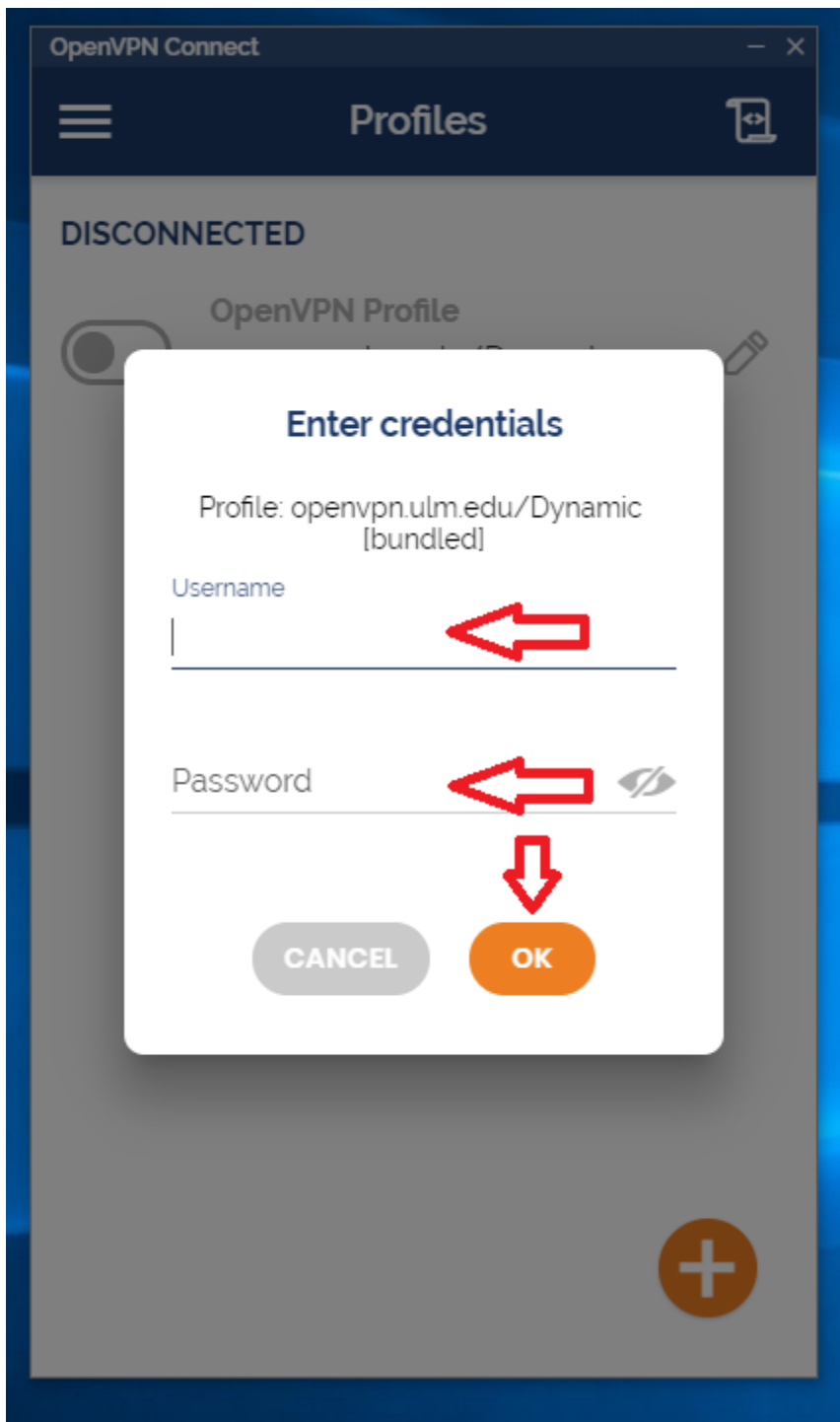
Step 8: Click “finish”



Step 10: Double click on the new icon on your desktop. When the OpenVPN app opens, click on the slider at the top.



Step 11: Enter your username (without the @ulm.edu) and your password and click “ok”.



Step 12: You should now see the slider turn green and other information show up. You are now connected to the ULM OpenVPN and can access your desktop through remote desktop.

When you are done using OpenVPN, just click on the green slider to disconnect the session. **Do NOT leave the OpenVPN session active any longer than necessary to complete your current work needs.** To connect again when you need to, start at step 10 of this guide.

