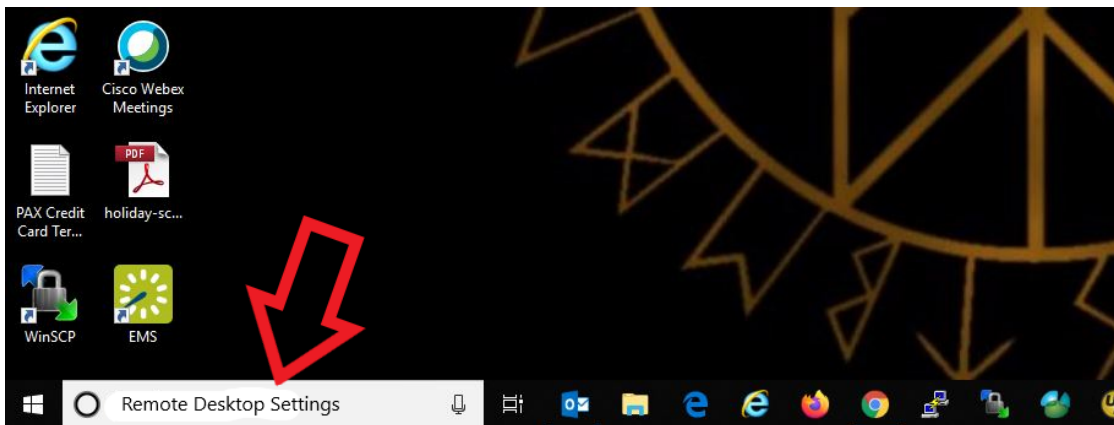


How to enable Remote Desktop Windows 10

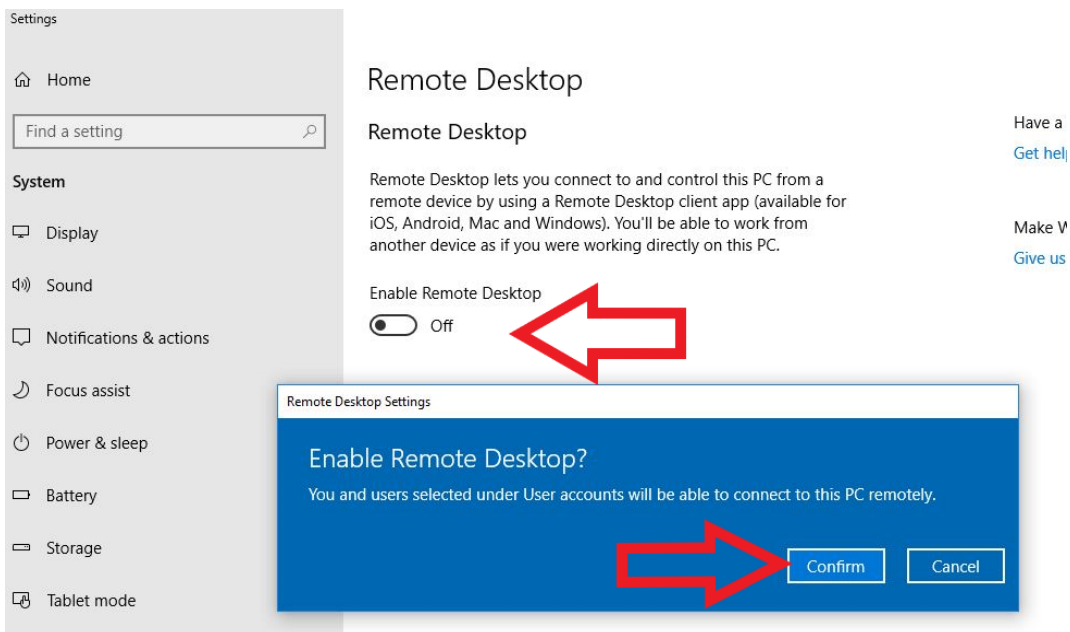
Remote Desktop must be enabled on your work PC. All ULM work PCs that have already been changed over to the Active Directory domain will have Remote Desktop enabled automatically.

Follow the steps to see if your PC has Remote Desktop enabled.

1. In the windows search box type “Remote Desktop Settings” and hit enter.

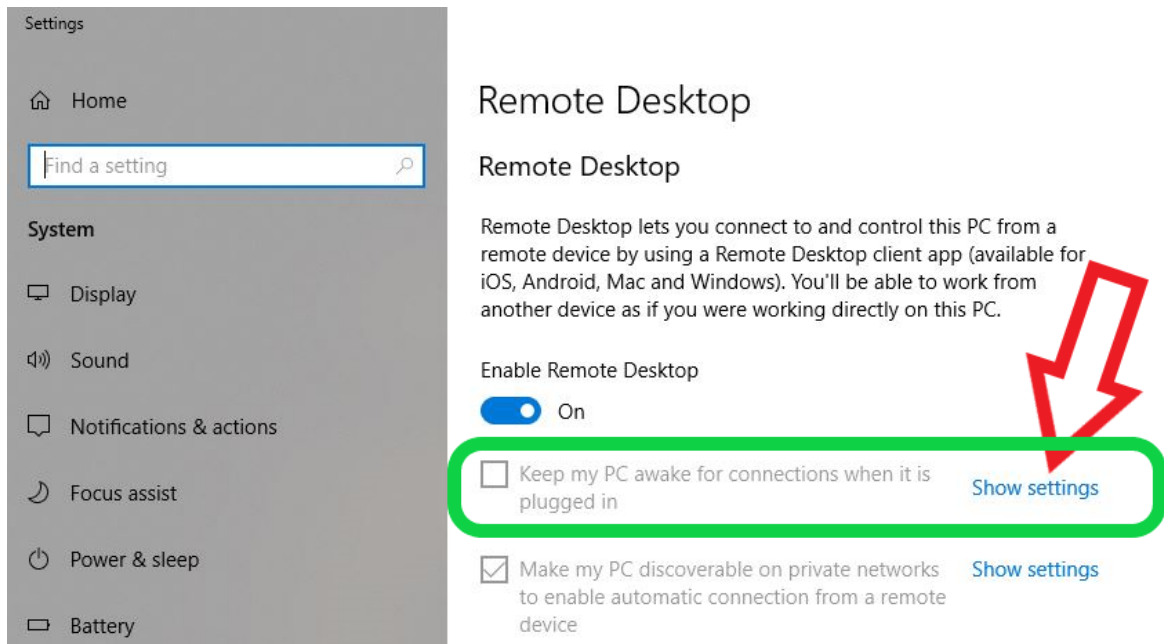


2. If “Enable Remote Desktop” is set to “On” and the check box is checked beside “Keep my PC awake for connections when it is plugged in”, your PC ready to go. You can move on to Step 7.
3. If “Enable Remote Desktop” is set to ‘Off’, click the switch to “On”. Then click “Confirm”.

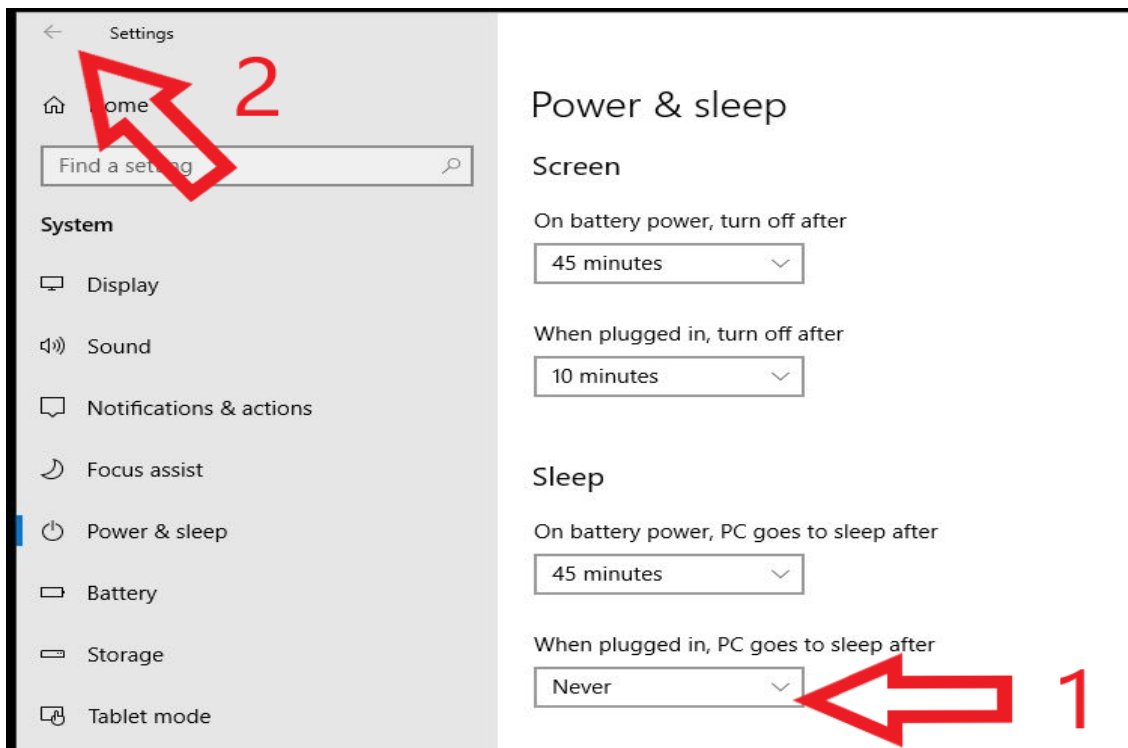


- Next we need to adjust the “Keep my PC awake for connections when it is plugged in” settings.

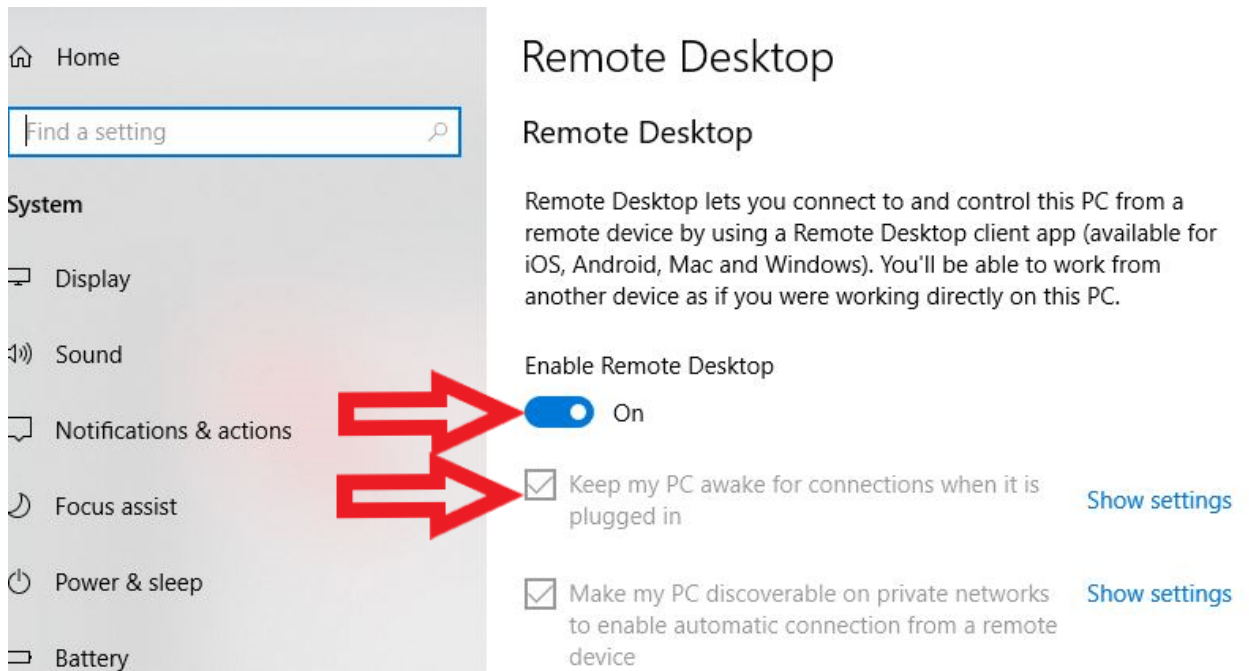
Click “Show settings”.



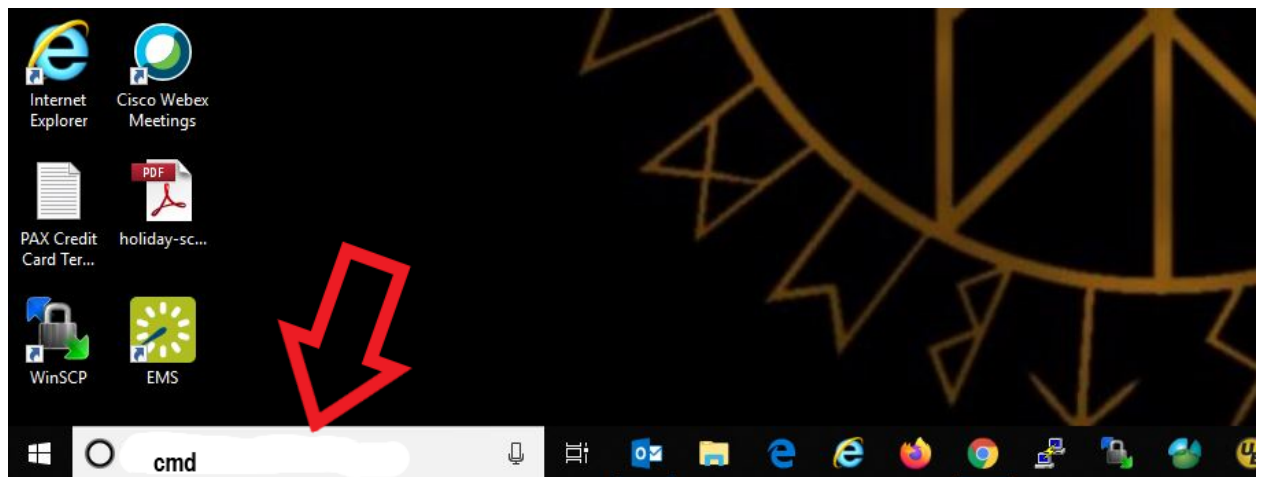
- If the PC goes to sleep, you cannot connect to it remotely. We need to make sure it never goes to sleep. **1.** Click the drop down menu under “When plugged in, PC goes to sleep after” and select “Never”. **2.** Click the back arrow. Close the window.



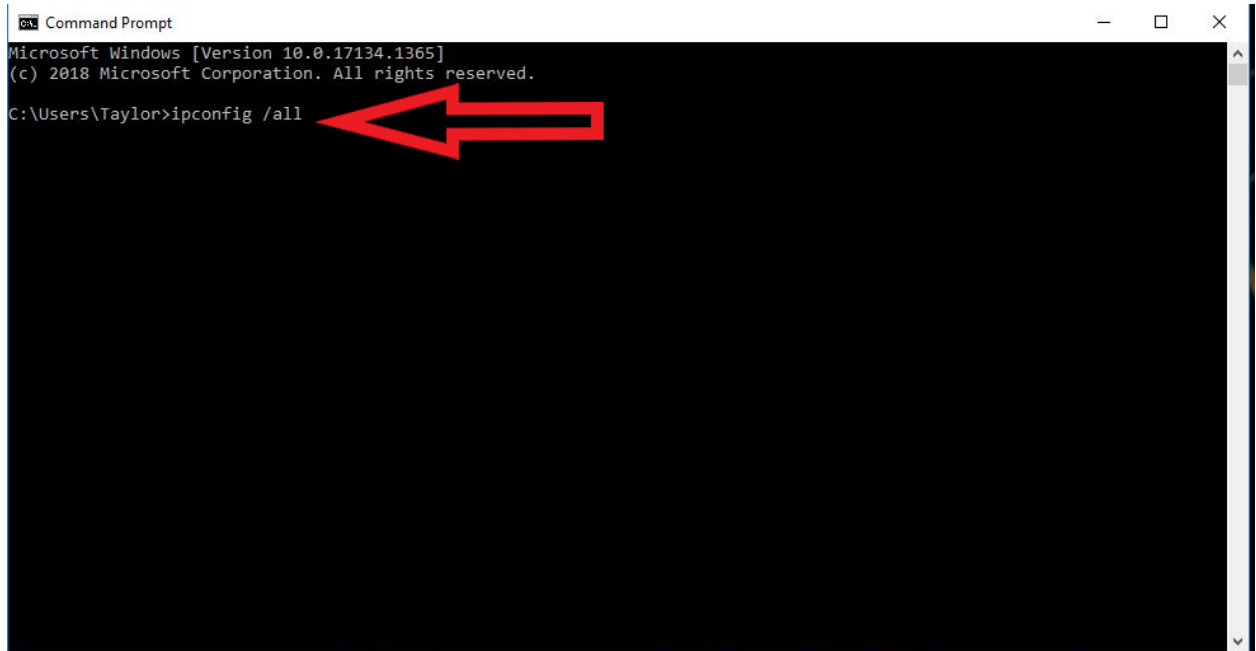
6. Verify that “Enable Remote Desktop” is set to “On”. Verify that the box is checked beside “Keep my PC awake for connections when it is plugged in.”



7. Your PC can now be accessed using the Remote Desktop Client tool from another Windows 10 PC. In order to connect to your PC from the Desktop Client, you'll need to know your work PC's IP Address. In the Windows Search box type "cmd" and hit enter to launch a command prompt.

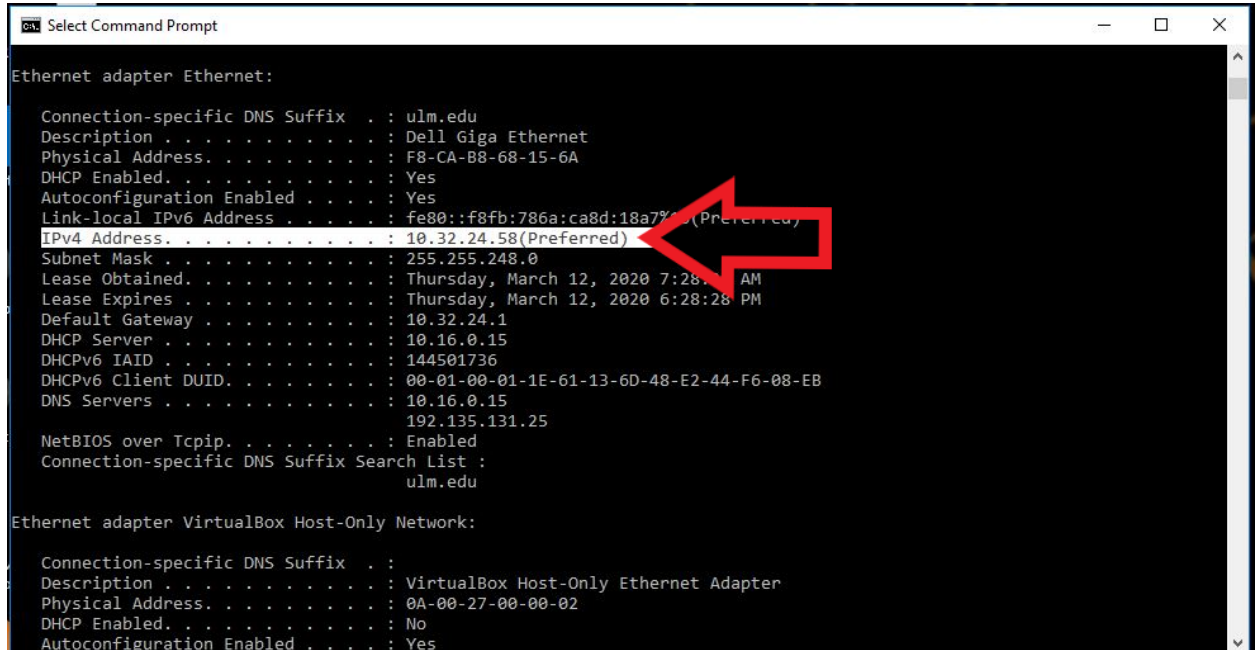


- At the command prompt type "ipconfig /all" and hit enter.



- Scroll up to find the IPv4 Address. The address you need will be followed by (Preferred)

-



- Make note of this IP Address. You will need to enter it in the Remote Client.
- Also remember, you need to leave your work PC on when you leave the office if you intend to remote in from home. If the PC is off, Remote Desktop will not work.