

Math 116
Homework 04

Blake Farman
University of South Carolina

October 18, 2016

5.2

2. Evaluate

(a) $\cos(12\pi)$

(b) $\sin\left(\frac{5\pi}{2}\right)$

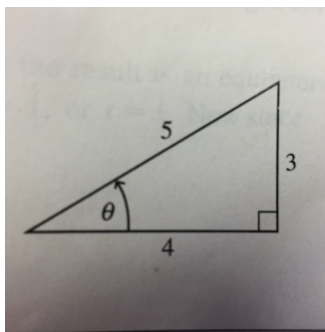
(c) $\sin\left(\frac{-9\pi}{2}\right)$

(d) $\cos(101\pi)$

4. What is $\cos(\theta + \pi)$ in terms of $\cos(\theta)$? (Hint: Use the unit circle).

6. (a) In the triangle shown, calculate $\sin(\theta)$ and $\cos(\theta)$.

(b) Calculate $\sin^2(\theta) + \cos^2(\theta)$.



5.3

Evaluate the following.

2. $\sin\left(\frac{7\pi}{4}\right)$.

4. $\cos\left(\frac{-3\pi}{4}\right)$.

8. $\cos\left(\frac{13\pi}{6}\right)$.

12. $\sin\left(\frac{29\pi}{6}\right)$.